

The background of the top half of the page is a dark grey technical drawing of a mechanical assembly, possibly a multi-cylinder engine block, rendered in a light grey wireframe style. The drawing shows various components like cylinders, pistons, and connecting rods, all interconnected.

# XTRAX OMNI

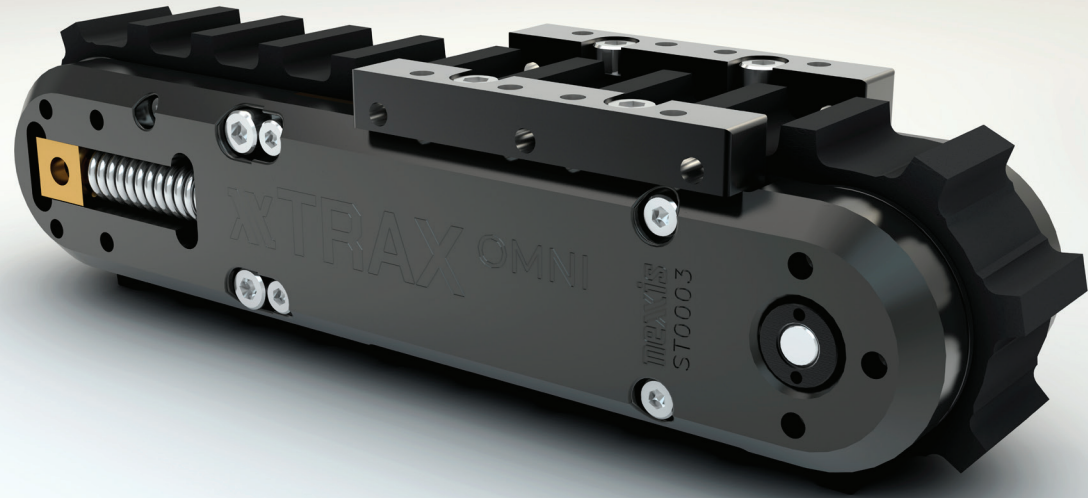
## Technical Specifications

**nexxis**

SixDe lab61 Powered  
by Nexxis

Xtrax Omni

# VERSATILE, COMPACT & RUGGEDIZED TRACK DRIVEN MODULE



The Xtrax Omni is a versatile, compact, and ruggedized track driven module specifically designed for the harshest environments. This depth rated unit boasts an unmatched payload capable of up to 23kg and a pull rating of up to 22kg. Ideal for various robotic and OEM applications the Xtrax Omni is built to the highest quality and unsurpassed reliability. Mining, subsea, nuclear and oil & gas are a few of the industries the

Xtrax has impacted—creating a positive response for all Nexxis customers.

## **Xtrax Omni is available in Stainless, Brass and Aluminium**

### STAINLESS STEEL

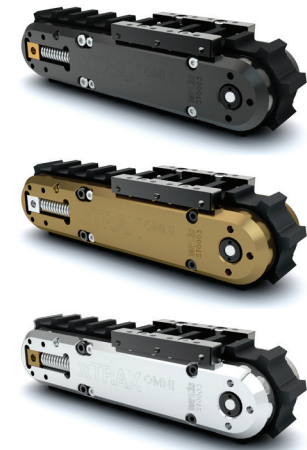
- Ideal for subsea applications
- Increased pull and pay load
- Easy decontamination in nuclear
- Corrosion resistance

### BRASS

- Increased pull and pay load
- Chemical resistance
- Good thermal performance

### ALUMINIUM

- Light weight
- Greater thermal performance in high temperature environments
- Anodized for corrosion resistance
- Ideal for magnetic applications



## Xtrax Omni

**BUILT TO  
THE HIGHEST  
QUALITY &  
UNSURPASSED  
RELIABILITY**

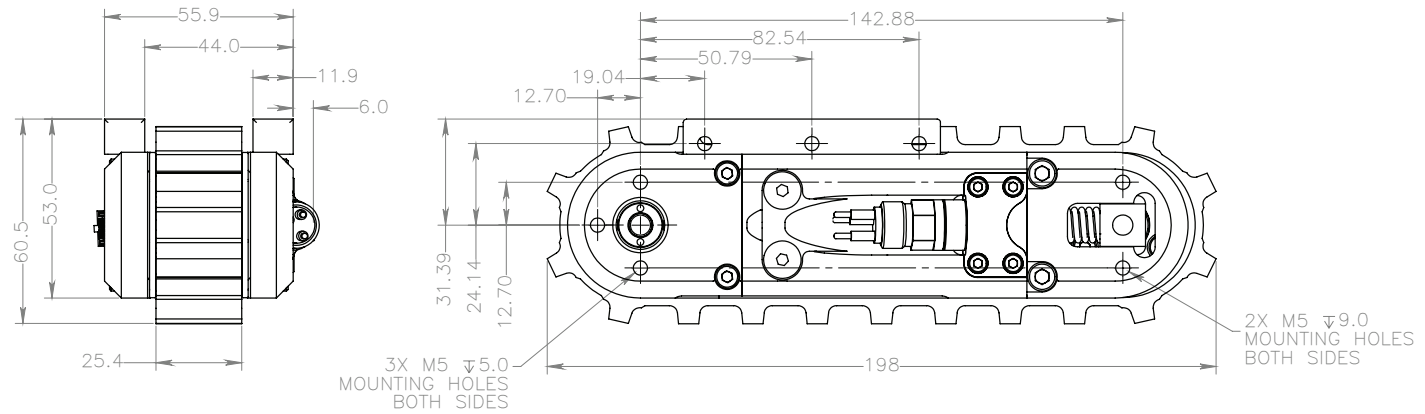


### XTRAX OMNI SPECIFICATIONS

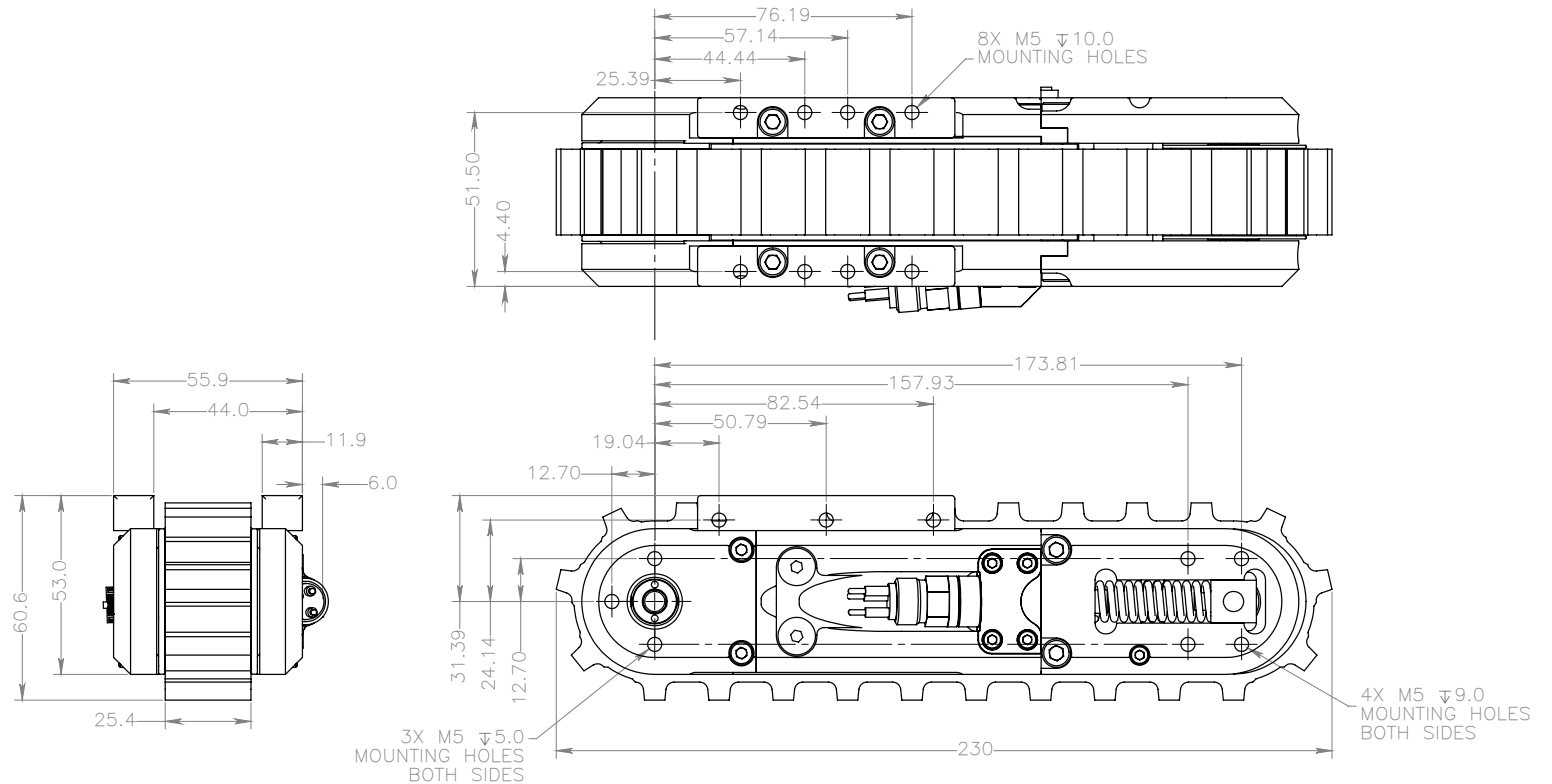
MAXON MOTORS	Standard	48Vdc, 124:1 Gear Ratio	
	High Torque	48Vdc, 276:1 Gear Ratio	
OPERATING VOLTAGE	0 – 48Vdc		
OPERATING CURRENT	1.0 A, Maximum Continuous		
MAXIMUM SPEED	Standard	9m/min (30 fpm)	
	High Torque	4m/min (13 fpm)	
PULL RATING	Standard	6kg (13 lb) Nominal, 12kg (26 lb) Maximum	
	High Torque	14kg (31 lb) Nominal, 22kg (48 lb) Maximum	
PAYLOAD	Standard	Up to 13.5kg (30 lb)	
	High Torque	Up to 23kg (50 lb)	
TEMPERATURE RATING	Operating/Storage	-20 – 50°C	
COMMUNICATIONS	Embedded	RS485	
	Direct Drive	Client Specified Motor Driver, Encoder Signal Output	
CONNECTOR OPTIONS	Direct Drive	BIRNS, 7 Pos.	
	Embedded	BIRNS, 7 Pos., IE-55, 4 pos <sup>1</sup>	
DEPTH RATING	Standard	150m	
	Deep Water <sup>1</sup>	300m	
XTRAX WEIGHT	ST Version 198mm (Standard)	Aluminum	1.1kg (2.3 lb)
		Brass	2.2kg (4.9 lb)
		Stainless Steel	2.1kg (4.7 lb)
	STX Version 230mm (Extended)	Aluminum	1.2kg (2.6 lb)
		Brass	2.4kg (5.3 lb)
		Stainless Steel	2.3kg (5.1 lb)
MOTOR ENCODER	10-Bit Quadrature A/B, 256 ppr		

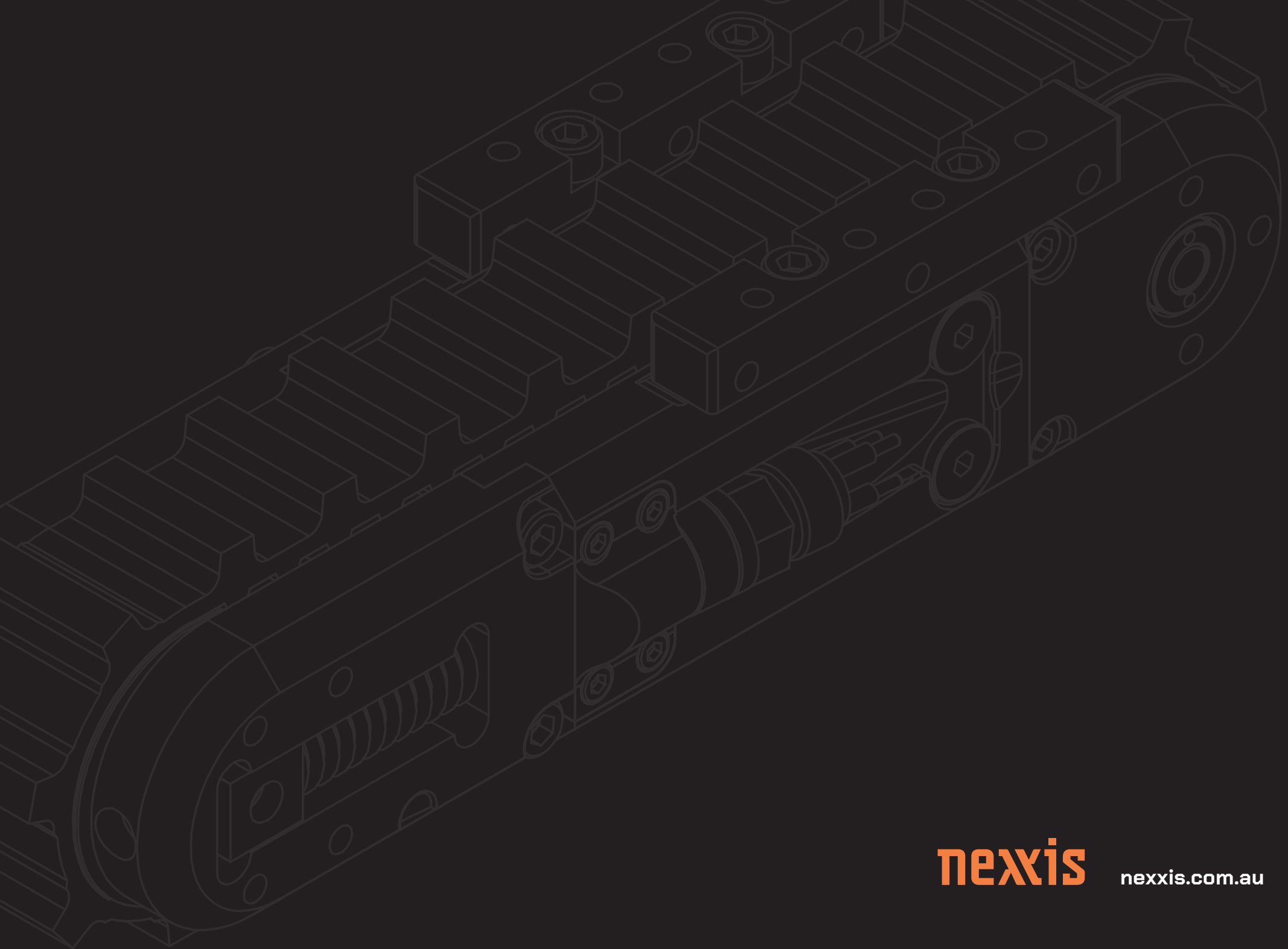
<sup>1</sup>Available Upon Request

# XTRAX OMNI ST Standard Length



# XTRAX OMNI STX Extended Length





**nexxis**

[nexxis.com.au](http://nexxis.com.au)