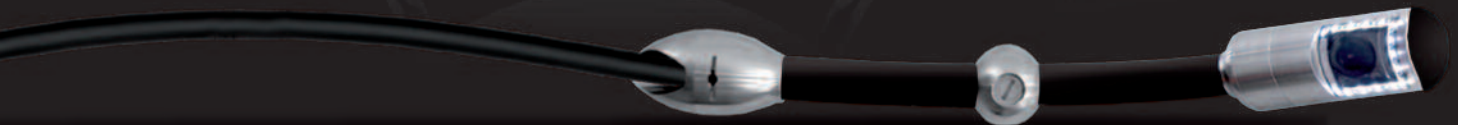




The fast, mobile and economical solution for visual inspections of pipe systems and medium-sized enclosures



The INVIZ BIG is the optimal solution for cost saving and reliable inspections of large volumes. With the latest high power LED illumination technology, the INVIZ BIG provides very fine, true-color inspection details up to distances of 80 meters. The compact and lightweight drum frame with the storable LCD monitor enables comfortable operation and high resolution imaging. Images and digital video are easily recorded in standard JPEG and Real Time movie MOV format.



#### Range of Application

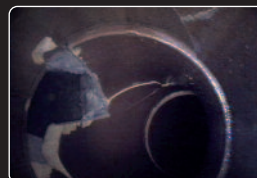
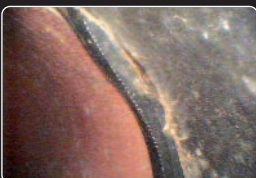
- :: Economical, robust visual inspection and documentation of internal pipe walls (DN 30.0 and larger)
- :: Recommended and approved for pharmaceutical, chemical, food and power plant industry
- :: Large volume pipes (openings of 1.2 inch and larger)
- :: Examination of walls for (deposits, erosion, corrosion and crack formations)
- :: Facility infrastructure and drinking water pipes

#### Unique Technology

- :: Simple axial tube inspections with various pushing tools
- :: Minimum maintenance and repair costs as a result of an extreme robust construction
- :: Winding and unwinding of the probe as needed during operation
- :: Latest high power LED illumination technology

- :: Waterproof up to 73 psi (5 bar)
- :: Flexible mounted probe head with a 10 mm push pole adapter for various fibre rods
- :: Power independent operation (optional)
- :: Adjustable focus, various optics
- :: Precision adjustable drum brake
- :: Practical handheld 6,5" LCD display unit
- :: Includes standard sized centering tools
- :: Easy and secure as the system tolerates operating errors

PW03-003\_1-1



<b>Probe head</b>	<ul style="list-style-type: none"> <li>:: 1/3 inch Sony® Super HAD Sensor</li> <li>:: Outstanding resolution with more than 300.000 pixels</li> <li>:: Automatic exposure time</li> <li>:: 92° FoV, straight view, f=4.6 mm</li> <li>:: Focus adjustment range from 30mm to 400mm</li> <li>:: Large DOF (depth of field)</li> <li>:: Head diameter 29mm</li> <li>:: Impact resistant stainless steel camera head</li> <li>:: Waterproof up to 73 psi (5 bar)</li> </ul>
<b>LCD and Control Unit</b>	<ul style="list-style-type: none"> <li>:: Smart Card image (JPG) and movie (MOV) recorder</li> <li>:: Manual light intensity controls</li> <li>:: 6.5" color LCD screen</li> <li>:: Durable connection</li> <li>:: Brightness, color and contrast control</li> </ul>
<b>Dimensions</b>	<ul style="list-style-type: none"> <li>:: 12.3 kg (27.1 lbs) plus monitor 1.4 kg (3.1 lbs) (30 m model)</li> <li>:: 420 mm, 390 mm, 290 mm (H x W x D)</li> <li>:: LCD unit 170 mm x 250 mm x 55 mm (H x W x D)</li> </ul>
<b>System Specifications</b>	<ul style="list-style-type: none"> <li>:: 100 - 240 VDC / 20 W, 50 Hz / 60 Hz, PAL or NTSC</li> <li>:: Kevlar reinforced polyurethan cable</li> <li>:: Composite video signal</li> <li>:: Steel body, partly black powder coated</li> <li>:: LED illumination</li> <li>:: 10mm push pole adapter</li> </ul>
<b>Operating Conditions</b>	<ul style="list-style-type: none"> <li>:: Camera: -10°C to +50°C (14°F to 122°F)</li> <li>:: Drum: -10°C to +45°C (14° to 113° F)</li> <li>:: Probe head is waterproof to 73 psi (5 bar)</li> </ul>
<b>Accessories</b>	<ul style="list-style-type: none"> <li>:: Centering tools &amp; push tools</li> <li>:: Transport case</li> <li>:: Standard: 30 meter   Optional: 50 or 80 meter model</li> <li>:: External video monitor, various recording systems</li> <li>:: Side view prism</li> <li>:: Text generator / On screen data display</li> </ul>

