

Mini-Cam SOLO Pro

Intelligent Portable
CCTV Inspection



60
metres

40
metres

OUR MOST INTELLIGENT, FLEXIBLE AND EASY-TO-USE SYSTEM...

The new Solo Pro was designed and developed in-house to provide our best ever solution for one-man surveys. Available in a choice of 3 coiler sizes – 40, 60 and 100 metre. This versatile and expandable system features industry standard recording and image capture plus a host of innovative new features. A truly customisable solution for cost effective surveys.

Mini-Cam Limited
tel +44 (0) 1942 270524 fax +44 (0) 1942 273735
email sales@minicam.co.uk
www.minicam.co.uk

Unit 4, Yew Tree Way, Stonecross Park,
Golborne • Warrington WA3 3FN • England



Control Unit (CCU)

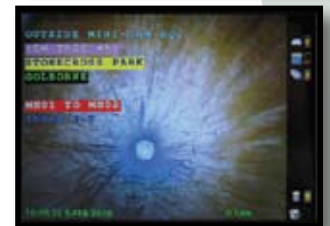
- High Resolution TFT Screen
- MPEG4 recording: plays in WinCan V7, V8 and Windows Media® Player*
- Internal memory size options - 16GB standard, expandable to 128GB
- SD/SDHC card and USB memory stick storage and transfer
- JPEG still image capture – on live or recorded video
- Alternative language options
- 3 x Zoom function – on live or recorded video
- 16 page colour text writer
- Thumbnail galleries
- Powered by internal Li-ion batteries giving 6 hours constant use
- Intelligent power saving options.
- Charge CCU direct from vehicle (12Vdc) or mains voltage (100V – 240vac)
- CCU is coiler mounted and is easily removed for desktop use
- IP54 CCU and coiler
- Light weight

Camera Head

- Sonde (options - 33khz, 512hz, 640hz)

Rod & Coiler

- 3 coiler sizes: 40, 60 and 100 metres



SOLO Pro's menu system is user configurable for ease of use.

CONTROL UNIT	Display	8" TFT LCD (800 x 600)
	File Format	MPEG4 video / JPEG snapshots
	Power	Internal rechargeable Li-ion cells
	Internal Storage	Solid State memory (expandable to 128GB)
	External Storage	SD/SDHC card / USB2.0 memory stick
	Weight	3kg
	Dimensions	435mm(w) x 250mm(h) x 140mm(d)
CAMERA HEAD	Size	41 mm ø
	Construction	Stainless Steel
	Pipe Compatibility	50–225mm
	Imager	1/4" color CCD DSP
	Effective pixels	512 x 582 (PAL)
	Resolution	470 HTVL (enhanced)
	Sensitivity	<1.0 lux
	Aperture / FOV	F2.5 / 75°
COILER	Rod Length	40m / 60m / 100m
	Weight	15kg / 20kg / 30kg
	Height	620mm / 890mm / 960mm

*may require additional codec software.

Optional Reporting
Software available:

ProPIPE
REPORTING
SOFTWARE

WinCan V8
SOLO

Mini-Cam Ltd.
Pipeline Inspection Systems