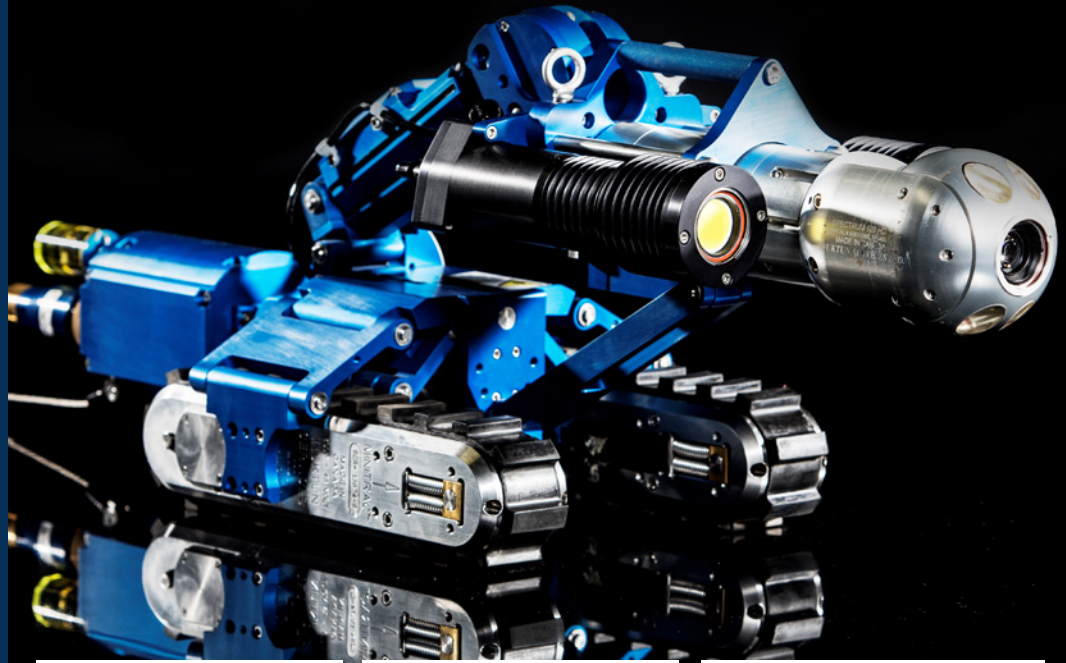




# Versatrax 150™

Submerged or on land, our Versatrax 150™ pipe inspection systems are able to operate in pipe diameters from 6in / 150mm and greater with the chassis optimized in a matter of seconds. Modular design, precise controls and ease of operation deliver power and reliability that can be tailored to meet the specific needs of your inspection requirements.

For more information on advanced remote inspection systems contact Inuktun today.



## SPECIFICATIONS

<b>VEHICLE</b>	
<b>Variable Speed Transporter</b>	30ft / 9m per minute Brass, aluminum, or stainless steel 6000 / 7000 series Minitracs™ (clutched or non-clutched)
<b>Tether Cable</b>	Up to 1,500ft / 457m (multi-conductor abrasion resistant Rislax® Kevlar® 700lb strength member, yellow jacket)
<b>Weight</b>	88lb / 40kg with brass Minitracs™
<b>Pipe Diameters</b>	6in / 150mm to 12in / 300mm inline chassis or 12in / 300mm and greater parallel chassis
<b>Chassis Material</b>	Aluminum
<b>Auxiliary Lights</b>	2x 50W Quartz / halogen Variable intensity
<b>CAMERA</b>	
<b>Material</b>	Aluminum or 316 stainless steel
<b>Type</b>	¾in Color EX VIEW CCD
<b>Sensitivity</b>	< 1.5lux
<b>Resolution</b>	460 TV lines
<b>Focus</b>	Auto or manual (remote)
<b>Exposure</b>	Auto and manual
<b>Zoom</b>	40:1 (10x optical 4x digital)

<b>Lights</b>	3x High intensity variable LEDs
<b>Weight</b>	6.6lb / 3kg (aluminum version)
<b>Format</b>	NTSC / PAL
<b>OPERATING ENVIRONMENT</b>	
<b>Temperature</b>	0°–50°C (32°–122°F)
<b>Depth Rating</b>	200ft / 60m
<b>CONTROL SYSTEM</b>	
<b>Power</b>	Voltage (Nom): 115 / 230VAC 800W Suggested Generator / Inverter: 1kw 2Kw with optional winch
<b>Chassis</b>	18.76in <sup>W</sup> x 5.75in <sup>H</sup> x 12in <sup>L</sup> 476mm <sup>W</sup> x 146mm <sup>H</sup> x 304mm <sup>L</sup>
<b>Interface</b>	Membrane panel with dual proportional joysticks, cruise control, keyboard entry
<b>Tether Winch</b>	Electric variable speed, 1hp motor, distance counter
<b>Video Overlay</b>	Date and time, pan, tilt and zoom feedback, tether distance, menu system for options, inclinometer, keyboard entry
<b>Options</b>	Manual crank tether winch, Pelican® case and / or pendant controller, sunlight readable monitor, rear camera

<b>APPLICATIONS</b>	<ul style="list-style-type: none"> <li>• Sewer and storm drains</li> <li>• Hydroelectric penstocks and infrastructure</li> <li>• Steam headers</li> <li>• Tanks and pressure vessels</li> <li>• Oil and gas refineries and pipelines</li> <li>• Pulp and paper mills</li> <li>• Mining</li> </ul>
<b>BENEFITS</b>	<ul style="list-style-type: none"> <li>• Waterproof to 200ft / 60m</li> <li>• Long range inspections to 1,500ft / 457m</li> <li>• Low maintenance</li> <li>• High definition color camera available as an option for outstanding image clarity</li> <li>• Intuitive controls for ease of operation</li> <li>• Clutched tracks for easy retrieval</li> <li>• Steerable in parallel configuration</li> </ul>

MODULAR MOBILE ROBOTIC  
CRAWLER VEHICLES

INDUSTRIAL WATERPROOF  
CAMERA SYSTEMS

... see it for yourself

# INUKTUN

CRAFTSMANSHIP IN HIGH TECHNOLOGY

## CONTACT US

Phone Toll Free in North America  
1.877.INUKTUN | 1.877.468.5886



### INUKTUN US, LLC

103 Rio Rancho Drive NE, Suite A-6,  
Rio Rancho, New Mexico, 87124, USA  
Phone: 505.994.0702 | Fax: 505.994.0726  
[www.inuktun.us](http://www.inuktun.us) | [sales@inuktun.us](mailto:sales@inuktun.us)



### HANGZHOU INUKTUN ROBOTS LTD.

Building A, No. 478,  
WenSan Road Huaxing Time Square  
Hangzhou, Zhejiang Province, China  
[www.inuktun.cn](http://www.inuktun.cn) | [sales@inuktun.cn](mailto:sales@inuktun.cn)



### INUKTUN SERVICES LTD.

2569 Kenworth Road, Suite C,  
Nanaimo, BC, Canada V9T 3M4  
Phone: 250.729.8080 | Fax: 250.729.8077  
[www.inuktun.com](http://www.inuktun.com) | [sales@inuktun.com](mailto:sales@inuktun.com)



### INUKTUN EUROPE LTD.

Unit 3 Crombie House, Grandholm Village,  
Bridge of Don, Aberdeen, Scotland AB22 8BD, UK  
Phone: +44.1224.701444 | Fax: +44.1224.853860  
[www.inuktun-europe.com](http://www.inuktun-europe.com) | [sales@inuktun-europe.com](mailto:sales@inuktun-europe.com)



### INUKTUN ASIA PTE LTD.

16 Boon Lay Way, #01-43 TradeHub21,  
Singapore 609965  
Phone: +65.9383.6270 | Fax: +65.6795.4222  
[www.inuktun-asia.com](http://www.inuktun-asia.com) | [sales@inuktun-asia.com](mailto:sales@inuktun-asia.com)

## ABOUT INUKTUN

*Inuktun Services Ltd. (ISL) was founded in 1989 to design and manufacture Remotely Operated Vehicles (ROVs) and modular robotic systems for use in confined spaces and hazardous environments. Since then, the company has earned a reputation as the expert in remote controlled robotic inspection and instrumentation transport systems. Reliability, efficiency, quality, and cost-effectiveness are emphasized in the design of all equipment produced by ISL.*

*The company employs a multi-disciplinary team of engineers, scientists, administrative and production personnel at its facility in Nanaimo, British Columbia, Canada.*

*In addition to producing and selling a complete line of standard equipment for a variety of remote robotic inspection applications, the company also offers a complete range of engineering services from conceptual design through to project completion.*

*To ensure and maintain the company's high standard of quality systems assembly, integration and testing are accomplished using in-house electronic and machine assembly staff. In addition, ISL regularly develops partnerships with other businesses and consultants to provide specialty engineering in accordance with design criteria. As a result, ISL is able to provide customers with innovative, high-quality equipment that is functionally reliable, easily operated, and cost-effective.*

MODULAR MOBILE ROBOTIC  
CRAWLER VEHICLES

INDUSTRIAL WATERPROOF  
CAMERA SYSTEMS